

INSERTION GUIDE



COMFORTEAR® LACRISOLVE™ 180 ABSORBABLE PUNCTUM PLUGS FOR MEDIUM-TERM OCCLUSION THERAPY (180 DAYS)

Insertion of Comfortear® Lacrisolve® 180 Absorbable Punctum Plugs

1. Remove the pouch from the box and peel open the outer Tyvek® pouch to remove the inner foil pouch. The inner foil pouch is sterile at this point and may be opened onto a sterile field.
2. Tear open the foil pouch and remove the yellow foam holder containing the Comfortear® Lacrisolve® 180 Absorbable Punctum Plugs.
3. Use jeweler's type forceps to remove one of the plugs from between the grooves in the foam holder.
4. Guide the plug partially into the punctum and release the forceps. (Fig.1)
5. Use the tip of the forceps to push the plug out of sight into the horizontal canaliculus, approximately 4-6mm beneath the punctum. (Fig.2)

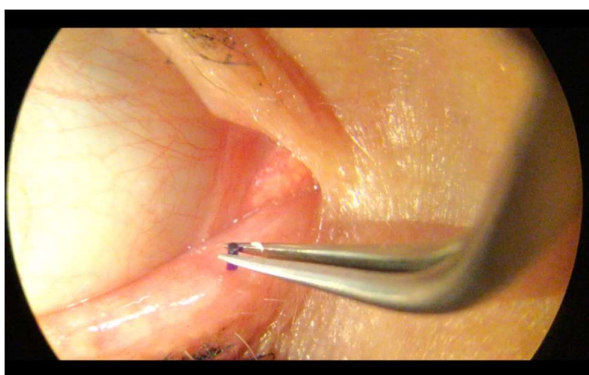


Figure1: Guide the plug partially into the punctum with jeweler's type forceps.

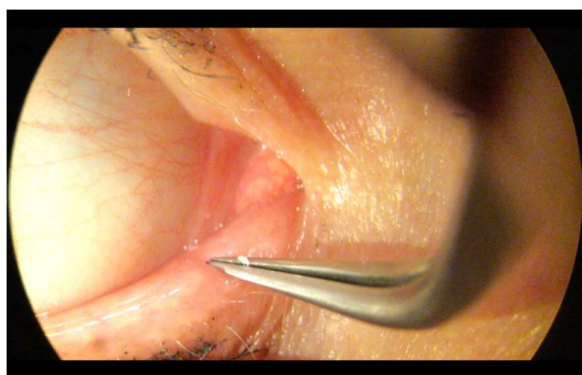


Figure 2: Use the tip of the forceps to push the plug out of sight.



www.altacor-pharma.com
For further details please call +44(0)118 902 6766